

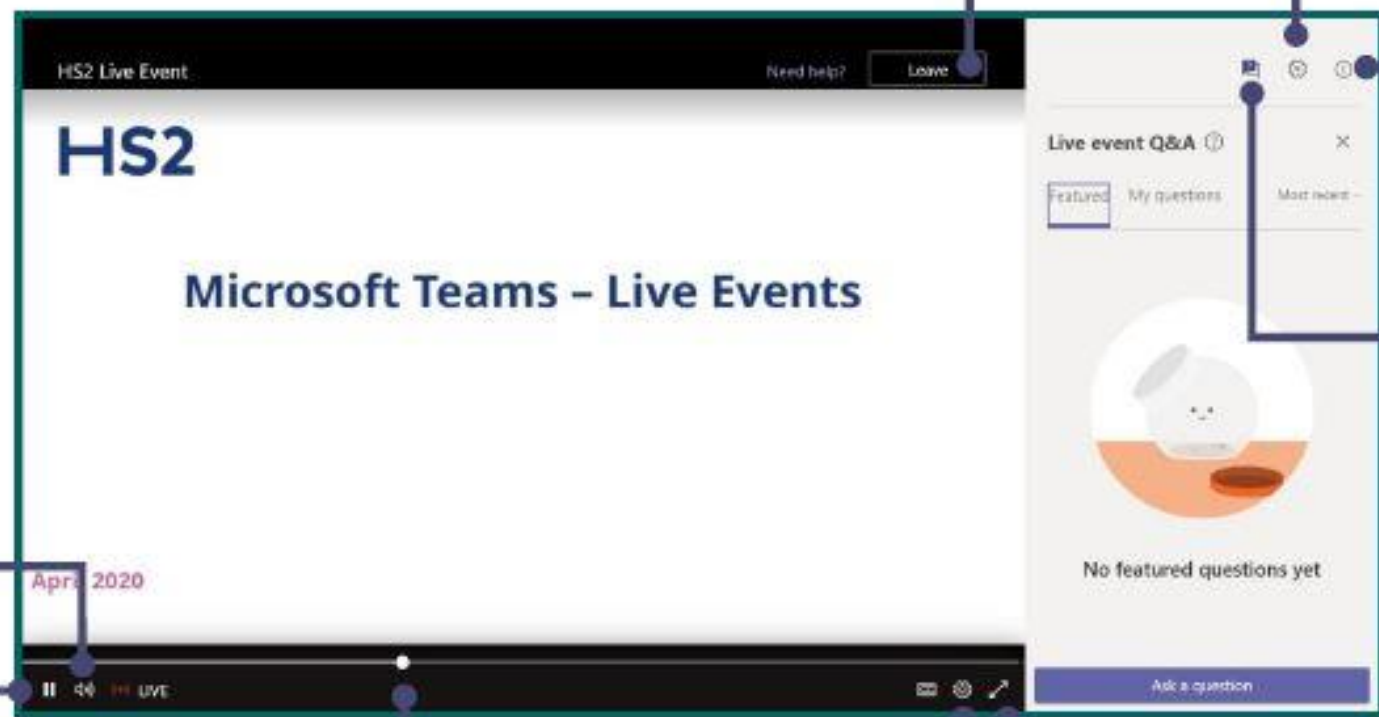
# HS2 Works Update Brackley Lane and surrounding area

April 2021

# HS2



# Quick guide to features for attendees



Click here to leave the Live event

Device settings – e.g. speakers

Live Event details

Q&A Panel:

- Ask a question
- See published answers
- Prioritise your feed

Adjust the Volume

Pause or play the live feed

Click and drag to rewind or fast forward

Adjust your video quality and turn captions on/off (if enabled by the Events Team)

Full Screen

# Agenda

Enabling  
works  
Fusion

Main works  
EKFB

Q&A

**fusion**

Working on  
behalf of

**HS2**

# **HS2 Utility diversion works Calvert update**

# Our conversation today

Overview & locations  
of the works

Phasing of the works

Q&A session

# Introduction



# Example of compound set up



Example of the compound set up that was used at Addison Road. This is the similar set up that will be used at Calvert Road compound.

Link below shows the process for Horizontal Directional Drilling (illustrative only)  
<https://www.rochestermnseo.com/horizontal-directional-drilling>



Drilling machine



# Noise and mitigation

**For more information**

Contact our HS2 Helpdesk team  
At day, every day of the year via

Freephone  
0800 434 434

Mobile  
0800 434 434

Email  
hs2helpdesk@hs2.org.uk

Visit  
www.hs2.org.uk

Local information  
www.hs2camden.co.uk

High Speed Two (HS2) Ltd  
The Strand 10, Suite 140 Queensway  
Birmingham, B1 3QA

Helpdesk (Freephone 24/7)  
08081 434 434  
visit www.hs2.org.uk

**SITE SAFETY**

- Keep quiet
- No admittance to unauthorized personnel
- Site safety - Mark the site

CM **HS2**

Safe at heart







# Utility diversion phasing



**Phase 1:** Site establishment set up on Calvert Road and Brackley Lane



**Phase 2:** Horizontal directional drilling



**Phase 3:** Diversion and connections of utilities along Werner Terrace, Brackley Lane and Calvert Road



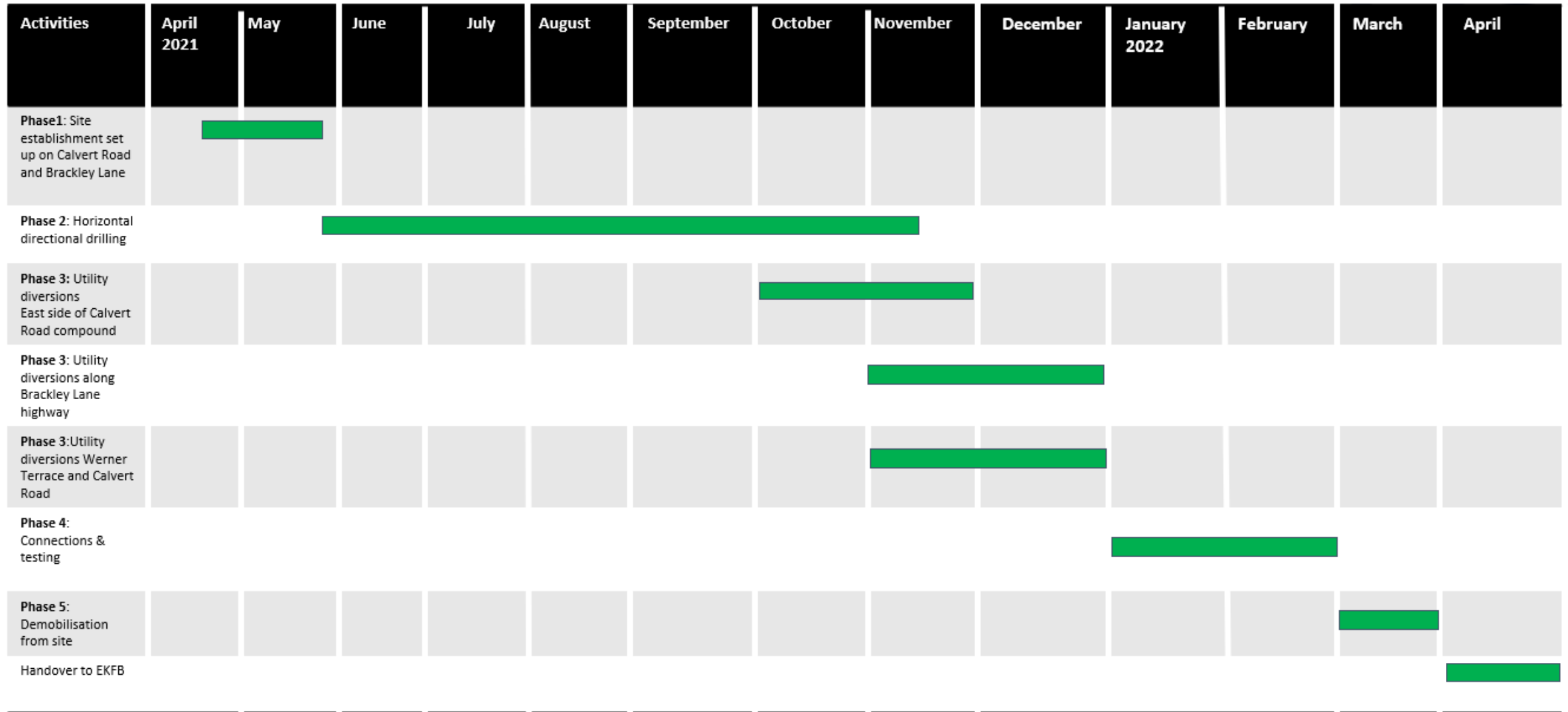
**Phase 4:** Connections, testing and commissioning



**Phase 5:** Demobilisation from site



# Timeline of works (Subject to consents approval)



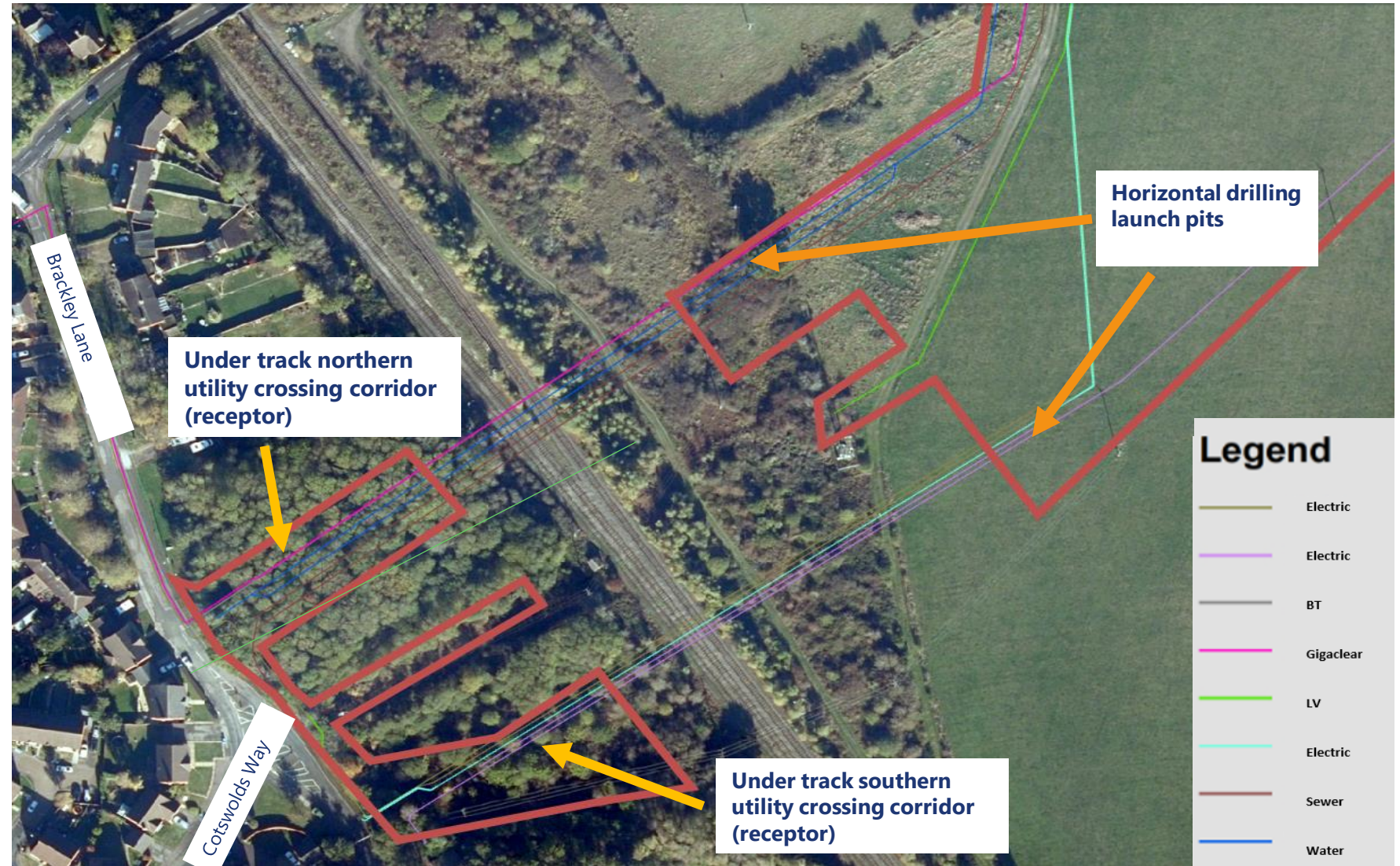
# Phase 1

- 19 April until the end of May 2021
- 24/7 Temporary traffic lights whilst constructing site bell mouths
- Restricted parking on Brackley Lane



## Phase 2 (subject to consent approval)

- 24 May 2021 to Mid November 2021
- Horizontal directional drilling
- Each utility crossing contains 5 drilling bores
- Some weekend works



## Phase 2

- Parking restrictions in place during horizontal directional drilling
- This to allow for the safe movement of vehicles entering and exiting the site compounds



## Phase 3 (subject to consent approval)

- November to December 2021
- Services diverted using open supported trenches
- Diversion and connections of utilities along the highway of Werner Terrace, Brackley Lane and Werner Terrace



## Phase 4 (subject to consent approval)

- January to February 2022
- New utility diversions will be connected and tested by each relevant utility provider





**Phase 5**

**March 2022**

**Completion of works**



# EKFB Slides

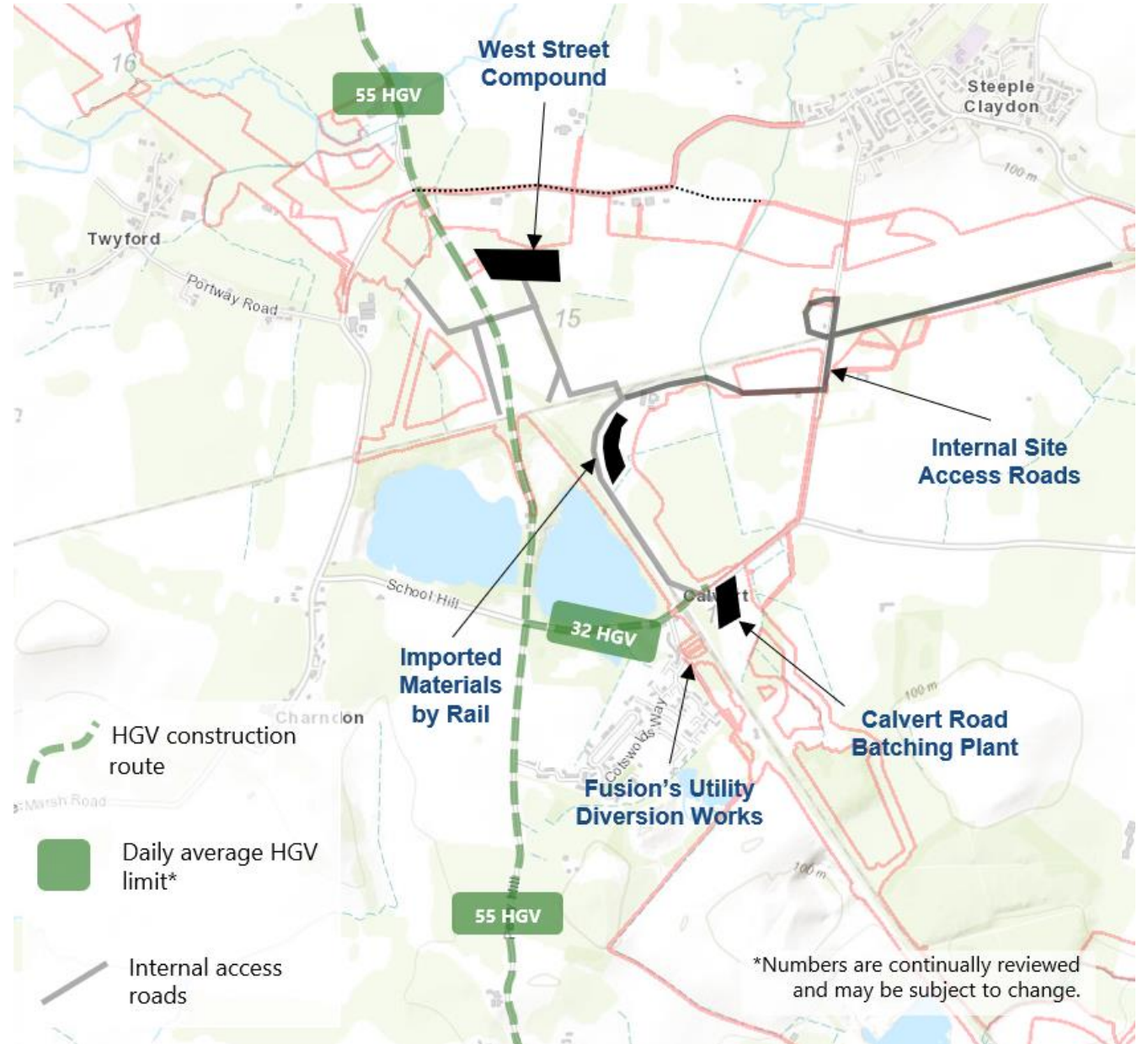


# Main works update

Works in this area:

- Setting up a concrete batching plant off Calvert Road
- Continued aggregate deliveries by rail

Approved HGV construction routes via Gawcott and Edgcott.



# Aggregate deliveries by rail

- Continued deliveries of aggregate by rail
- Work area is separate to the Fusion undertrack crossing so no interface.
- Deliveries approved outside of normal working hours and will continue to May / June this year



**19,000**

HGVs removed from  
the road network

**191,596**

tonnes of aggregate  
delivered



Aggregate is  
transported from a  
quarry near Bristol



Two railheads in  
Calvert by June 2021

**70,000**

HGVs will be removed  
from the roads by the  
end of the year

Key facts about  
our rail deliveries



# Site Plan

- Office facilities for up to 30 staff (2 storey block)
- Changing and welfare facilities for up to 50 staff
- Car parking area
- Four 15m high shaded silos and mixing unit
- Aggregate storage bays, with offloading areas for lorries



# Benefits of an on-site batching plant

Comparison based on daily production of 600m<sup>3</sup>



Mixed off-site: **100** x 6m<sup>3</sup> trucks per day



Mixed on-site: **44** x artic trucks per day

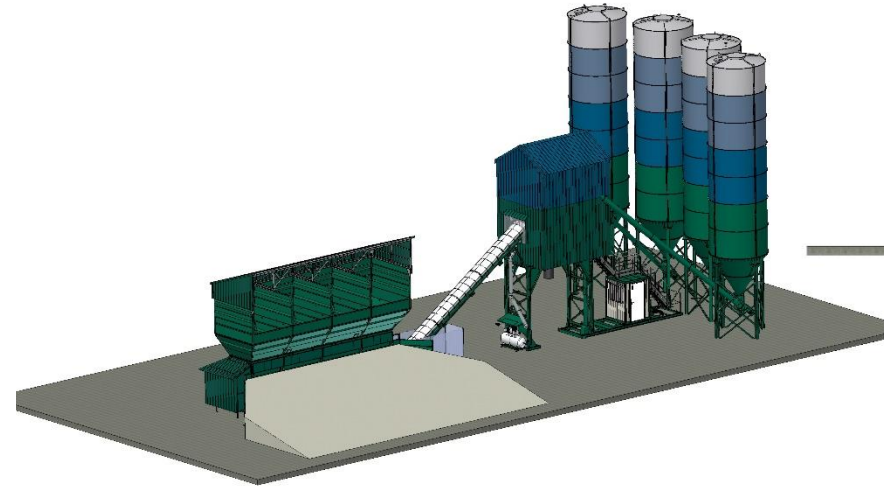
By mixing concrete on site, we will decrease the number of HGVs delivering concrete on the local road network by almost half every day.



# Concrete Batching Plant

## Key Information

- In order to build the structures in this area we will need large amounts of concrete.
- A batching plant is equipment that combines various ingredients to form concrete.
- Equipment includes conveyors, mixers and four cement silos to store the concrete.
- The compound will also contain offices and welfare facilities, and car parking.



**March - April**  
Compound  
set-up

**May - July**  
Assembling  
batching plant

**August**  
Concrete ready  
for use

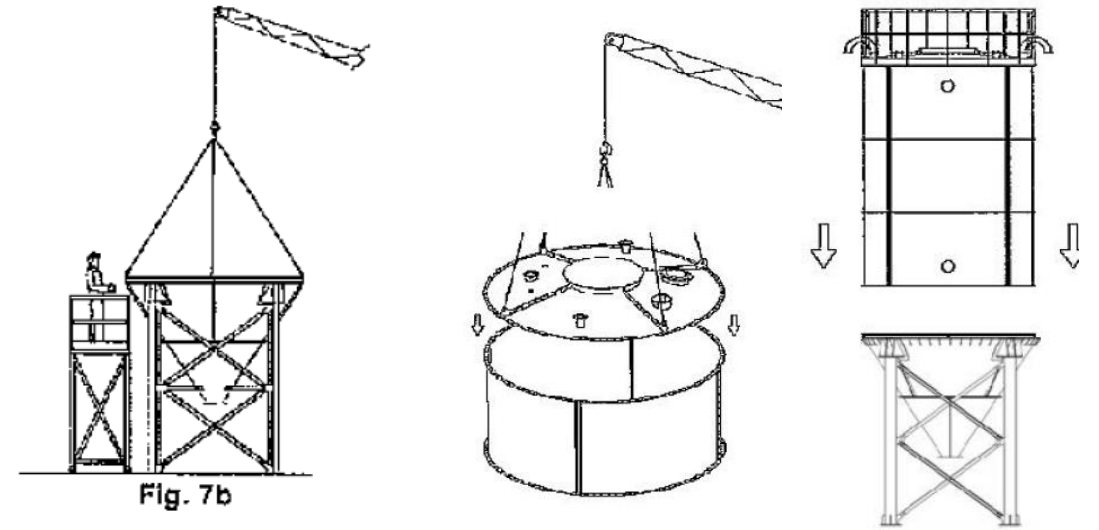




# Plant assembly

- Equipment and silos will be brought in within containers via road.
- Internal access roads will be used where possible to reduce HGVs on the local road network.
- The batching plant will be constructed on site, minimising the need for abnormal loads.

Silo assembly sequence



Example of an operational batching plant



Equipment ready to be transported to Calvert



# Managing environmental impacts



## NOISE

- White noise to permanent plant
- Hoarding around equipment
- Noise monitoring in place



## LIGHTING

- Full lighting design plan
- Low-level, down facing lighting



## DUST

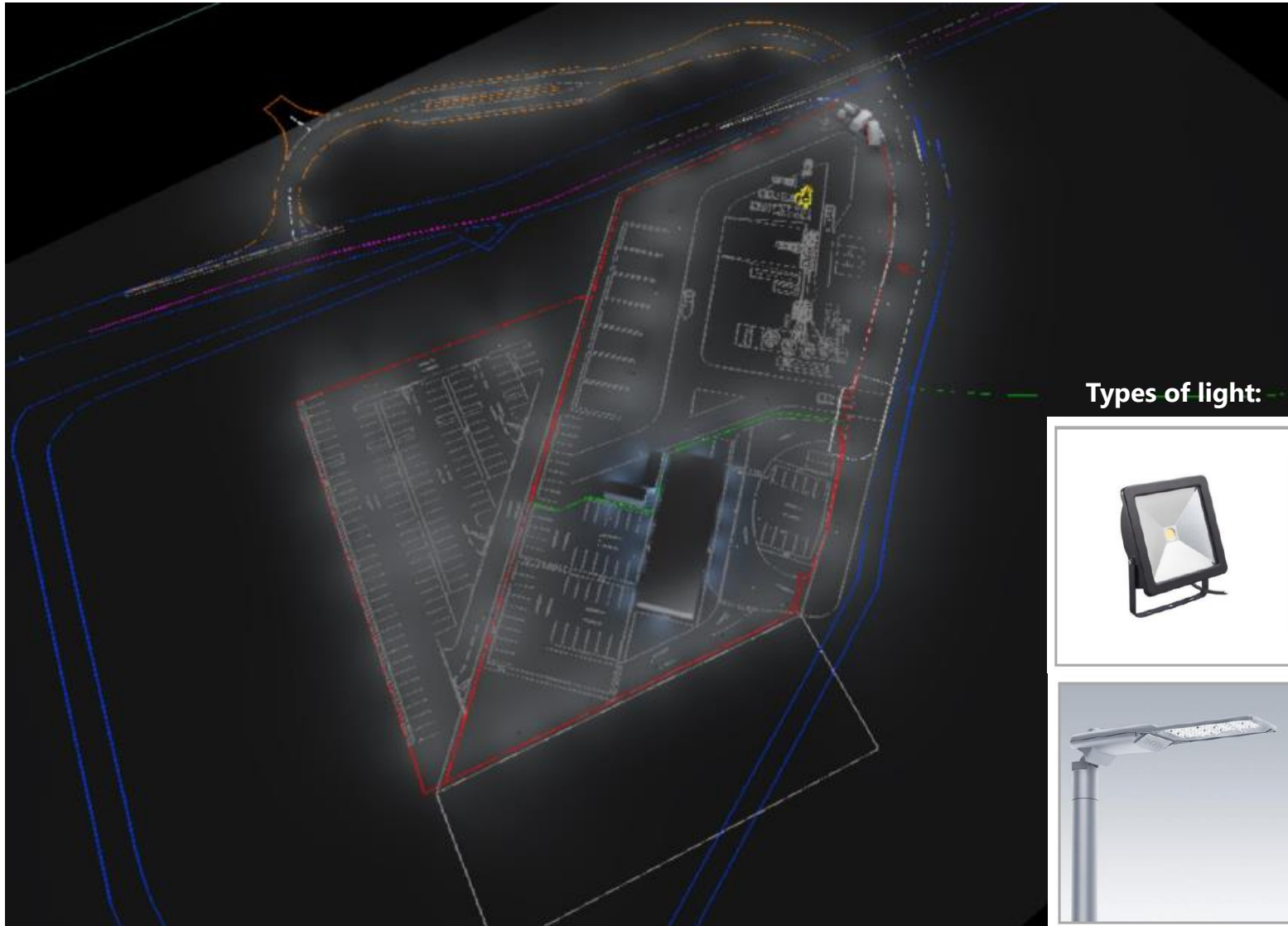
- Fully sealed system to prevent dust escape
- Enclosed mixing unit



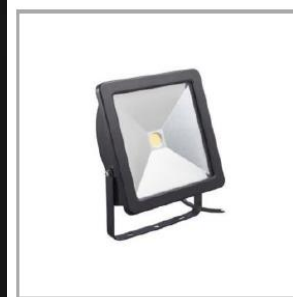
## VISUAL

- Shaded colouring of silos to blend in with landscape
- Location of equipment





Types of light:



## How we plan our lighting

- We have fully designed and modelled our lighting to ensure we use the right amount of lighting for security, while minimising local disturbance.
- This includes low-level and downward facing lighting.
- Sensor controlled lighting will be used where possible.

# Our Panel

- **Fusion**
- **Richard – Head of Community Engagement**
- **Simon –Community Engagement Manager**
- **Nigel – Project Manager**
- **EKFB**
- **David – Head of Community Engagement**
- **Chris – Community Engagement Manager**
- **Sean – Project Manager**





**Freephone**  
**08081 434 434**



**Minicom**  
**08081 456 472**



**Email**  
**hs2enquiries@hs2.org.uk**



# **We would like to hear your feedback**

**Have your say and help us improve these sessions**

<https://www.smartsurvey.co.uk/s/amershamupdate/>

